



# DETAILED ACCESSIBILITY INFORMATION FOR HYY'S ORGANISATIONAL PREMISES

1 December 2022

## 1. DOMUS GAUDIUM (LEPPÄSUONKATU 11)

### 1.1. Environment

### 1.2. Entrance

### 1.3. The Sivistys sauna premises

#### 1.3.1. Route to Sivistys

#### 1.3.2. Lounge

#### 1.3.3. Accessible toilet

#### 1.3.4. Sauna and dressing room

#### 1.3.5. Terrace

#### 1.3.6. Kitchen

### 1.4. Meeting room Groudon

#### 1.4.1. Route to Groudon

#### 1.4.2. Meeting room

#### 1.4.3. The toilet next to the meeting room

#### 1.4.4. Accessible toilet

#### 1.4.5. Kitchen

## 2. MECHELININKATU 3 D

### 2.1. Environment

### 2.2. Entrance

### 2.3. Route to Barrikaadi and Kabinetti

### 2.4. Meeting room Barrikaadi

### 2.5. Committee space Kabinetti

### 2.6. Accessible toilet

### 2.7. Kitchen

# 1. DOMUS GAUDIUM (LEPPÄSUONKATU 11)

## 1.1. Environment

- Accessible parking spaces (2) are available between Leppäsuonkatu 11 and Mechelininkatu 3D. You can ask the specialist in organisations for the code needed for the gate. The inner courtyard can be accessed by car from Mechelininkatu.
- There is a place for taxis to stop in front of Leppäsuonkatu 11, next to building B of Domus Academica (at Leppäsuonkatu 9 B). When the gate is open, you can also drive in front of the front door.



*Photo 1: Photo of the place where disabled taxis can stop.*



*Photo 2: Accessible parking spaces, access from Mechelininkatu.*

## 1.2. Entrance

- The route to the front door is accessible, and the premises can be accessed by wheelchair.
- The electronic opening mechanism for the outermost door is out of order, and the door must be opened manually.
- There is a low threshold at the door.
- The doors are heavy to open.



*Photo 3: Main entrance to the building, with a handicap push button for the double doors on the right (out of order) and the primary entrance on the left.*





*Photo 4: Primary door to the building, with an access pass reader (black) next to the door handle.*

## 1.3. The Sivistys sauna premises

### 1.3.1. Route to Sivistys

- Attic sauna Sivistys is located on the 3rd floor of the building. The lift in the lobby provides an accessible route to Sivistys. You can get the access pass needed for the lift from the event organiser.
- In the lift, you need to show the access pass to the reader before pressing the button for the desired floor.



*Photo 5: The accessible route to Sivistys is by a lift for which you need an access pass from the event organiser. Sivistys is located on the 3rd floor of the building.*

### 1.3.2. Lounge

- There is enough room in the lounge of Sivistys to accessibly manoeuvre a wheelchair provided that the event organiser has arranged the furniture with this in mind.
- The event organiser can borrow an induction loop from HYY's Services Office.



*Photo 6: Hall and hallway to the lounge in Sivistys. There is an accessible toilet in the hall.*



*Photo 7: The lounge in Sivistys.*





*Photo 8: The lounge in Sivistys.*

### 1.3.3. Accessible toilet

- Sivistys features an accessible toilet. The toilet door is 90 cm wide and easy to open. The door has a horizontal handle on the inside.
- There is enough space to manoeuvre a wheelchair in the toilet.
- You can get next to the toilet bowl by wheelchair, and there are adjustable handrails on both sides of bowl.
- You can reach the sink in the toilet from a wheelchair.
- The hand dryer is too high to be used from a wheelchair.



*Photo 9: Accessible toilet.*



*Photo 10: Accessible toilet.*

#### 1.3.4. Sauna and dressing room

- The doors to the sauna and dressing room are 90 cm wide. They do not have horizontal handles. The toilet in the dressing room is not wheelchair accessible.
- There is enough room in the dressing room and the showers to manoeuvre with assistive equipment. There is no seat you can use while washing yourself in the shower.
- There is enough room in the sauna for a shower wheelchair once the bottom bench is moved out of the way under the other benches.



*Photo 11: Shower facilities.*





*Photo 12: Sauna.*



*Photo 13: Dressing room.*



*Photo 14: The sink in the non-accessible toilet next to the dressing room.*



*Photo 15: The non-accessible toilet next to the dressing room.*



### 1.3.5. Terrace

- You can get to the glazed terrace while using assistive equipment, and there is enough room on the terrace to manoeuvre a wheelchair. The terrace door opens manually.
- The threshold to the uncovered part of the terrace is high and the doorway narrow (75 cm), which means that there is no accessible entrance to it.
- The door from the lounge to the terrace opens towards the terrace, with a gently rising ramp on the side of the terrace behind the door. The ramp is around the same width as the door. Due to the ramp and the direction in which the door opens, it may be difficult to open the door from a wheelchair from the side of the terrace.



*Photo 16: The way from the lounge to the terrace.*



*Photo 17: Terrace.*



*Photo 18: The way from the covered part of the terrace to the uncovered part.*





*Photo 19: The uncovered part of the terrace.*





*Photo 20: The way from the terrace inside to the lounge.*

### 1.3.6. Kitchen

- There is enough room in the kitchen to manoeuvre a wheelchair. The fridge handle is low enough for wheelchair users, for instance.
- You cannot get under the countertops with a wheelchair.



*Photo 21: Kitchen.*

## 1.4. Meeting room Groudon

### 1.4.1. Route to Groudon

- To get to the meeting room from the lobby, you will first need to go through a glass door that opens inwards. The door is heavy and features an electronic lock. There is a threshold at the doorway.
- The door to the meeting room is 79 cm wide, with a 3 cm high threshold at the doorway. The door opens inwards towards the meeting room and is very heavy. The door has an electronic lock located high above the handle.



*Photo 22: The way to Groudon.*



*Photo 23: The door from the lobby to the hall.*





*Photo 24: The way to Groudon.*

### 1.4.2. Meeting room

- There is enough room in the meeting room to manoeuvre a wheelchair provided that the event organiser has arranged the furniture in a manner that keeps passageways free.
- When using Groudon, you have two toilets at your disposal. To get to the accessible toilet, you will need to take the lift from the lobby. There is also a non-accessible toilet next to the meeting space itself.



*Photo 25: Meeting room.*

### 1.4.3. The toilet next to the meeting room

- There is a toilet next to the meeting room. There are two 3 cm high thresholds and two light doors on the way to the toilet.
- The outer toilet door is 81 cm wide and the inner one is 70 cm wide. The doors have no horizontal handles.
- The outer room in the toilet has a sink that you can reach with a wheelchair.
- There is not enough room in the outer room to turn around with a wheelchair.
- There is not enough room in the toilet to enter it with a wheelchair.



*Photo 26: The sink area of the toilet next to the meeting room.*



*Photo 27: The toilet next to the meeting room.*



#### 1.4.4. Accessible toilet

- The route to the accessible toilet goes by lift from the lobby to floor -1. No key is needed for the lift.
- The door to the accessible toilet is easy to open and has a horizontal handle on the inside.
- You can get next to the toilet bowl by wheelchair, and there are adjustable handrails on both sides of the bowl.
- You can reach the sink in the toilet by wheelchair.
- There is also a changing table in the toilet.
- The toilet features an alarm system that is activated by pulling a rope hanging next to the toilet bowl. The alarm can be heard outside the toilet and also turns on a red light next to the door.



*Photo 28: The toilet seen in the photo, located on floor -1, is accessible.*



*Photo 29: The accessible toilet on floor -1.*



*Photo 30: Accessible toilet.*

### 1.4.5. Kitchen

- You can get under the kitchen worktop with a wheelchair.
- There is enough room in the kitchen to manoeuvre a wheelchair once the furniture in the room has been moved out of the way.



*Photo 31: The kitchen in Groudon.*



## 2. MECHELININKATU 3 D

### 2.1. Environment

- Accessible parking spaces (2) are available between Leppäsuonkatu 11 and Mechelininkatu 3D. You can ask the specialist in organisations for the code needed for the gate. The inner courtyard can be accessed by car from Mechelininkatu.



*Photo 32: Accessible parking spaces.*

## 2.2. Entrance

- The accessible entrance from street level to staircase D at Mechelininkatu 3 is via a ramp marked with yellow paint.
- You can enter the premises with a wheelchair.
- The front door and the door to the draught lobby open outward, and they are heavy and difficult to open from a wheelchair.

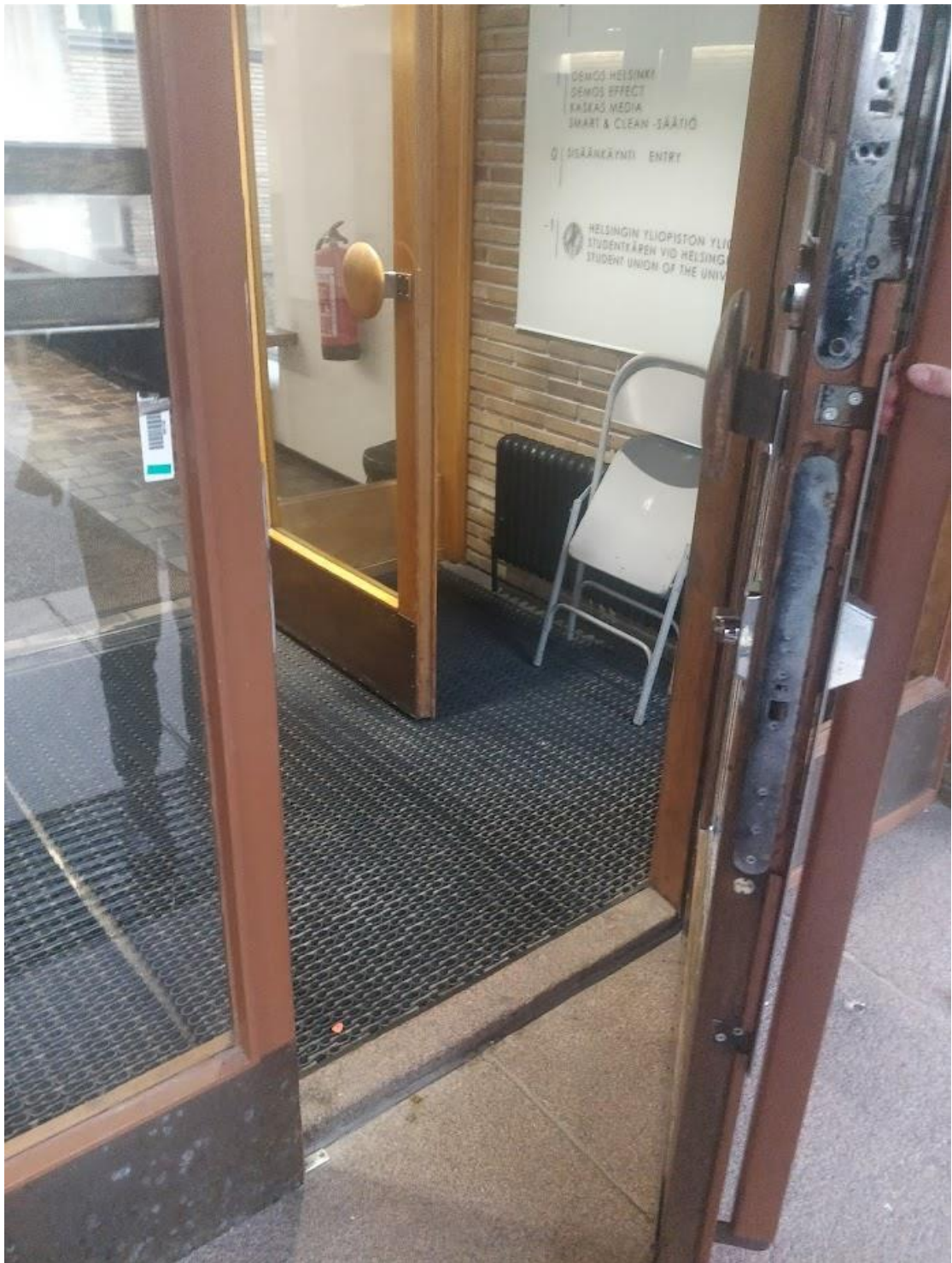


*Photo 33: Ramp leading to the entrance.*





*Photo 34: Entrance.*

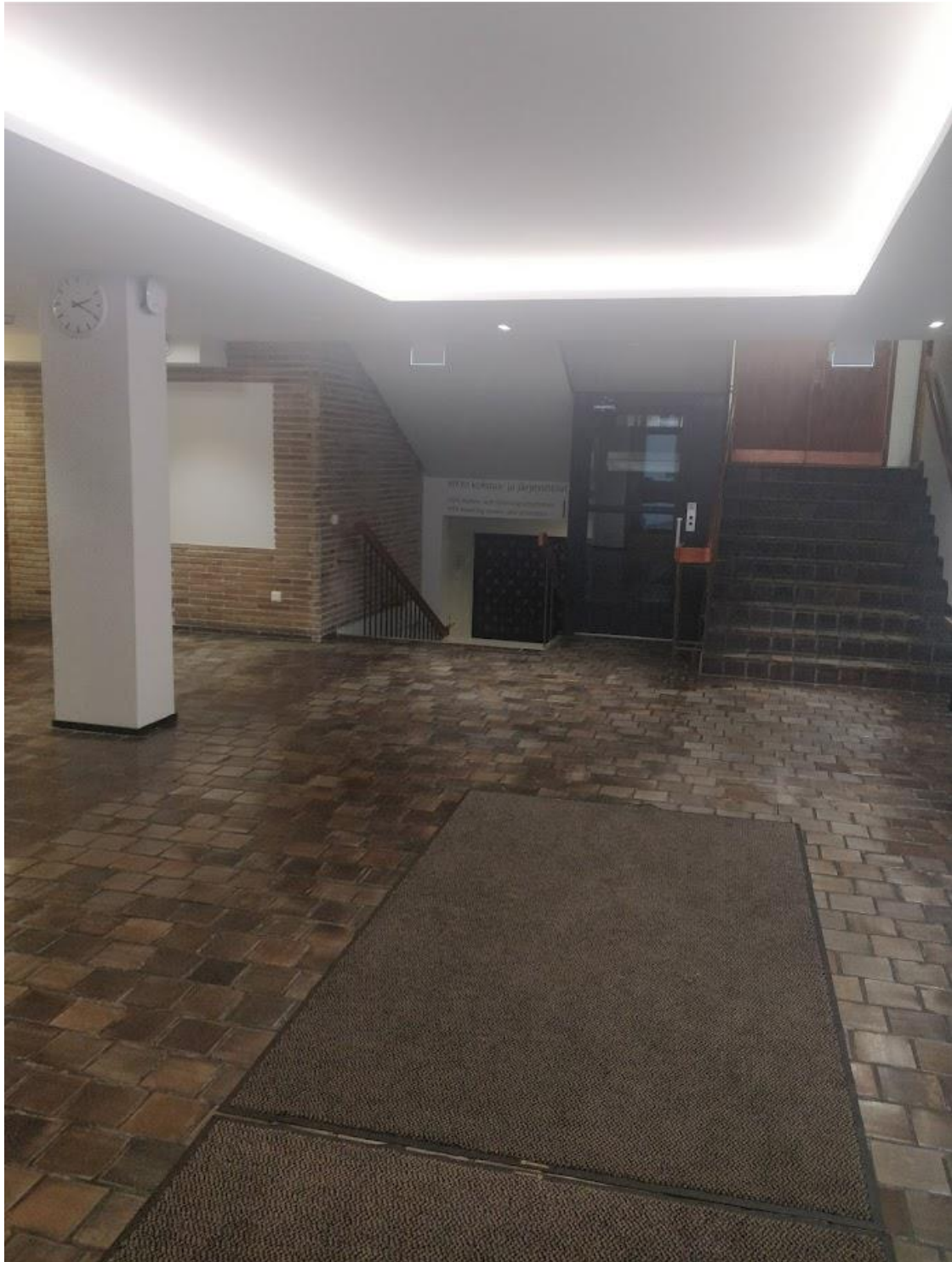


*Photo 35: Draught lobby at the entrance.*

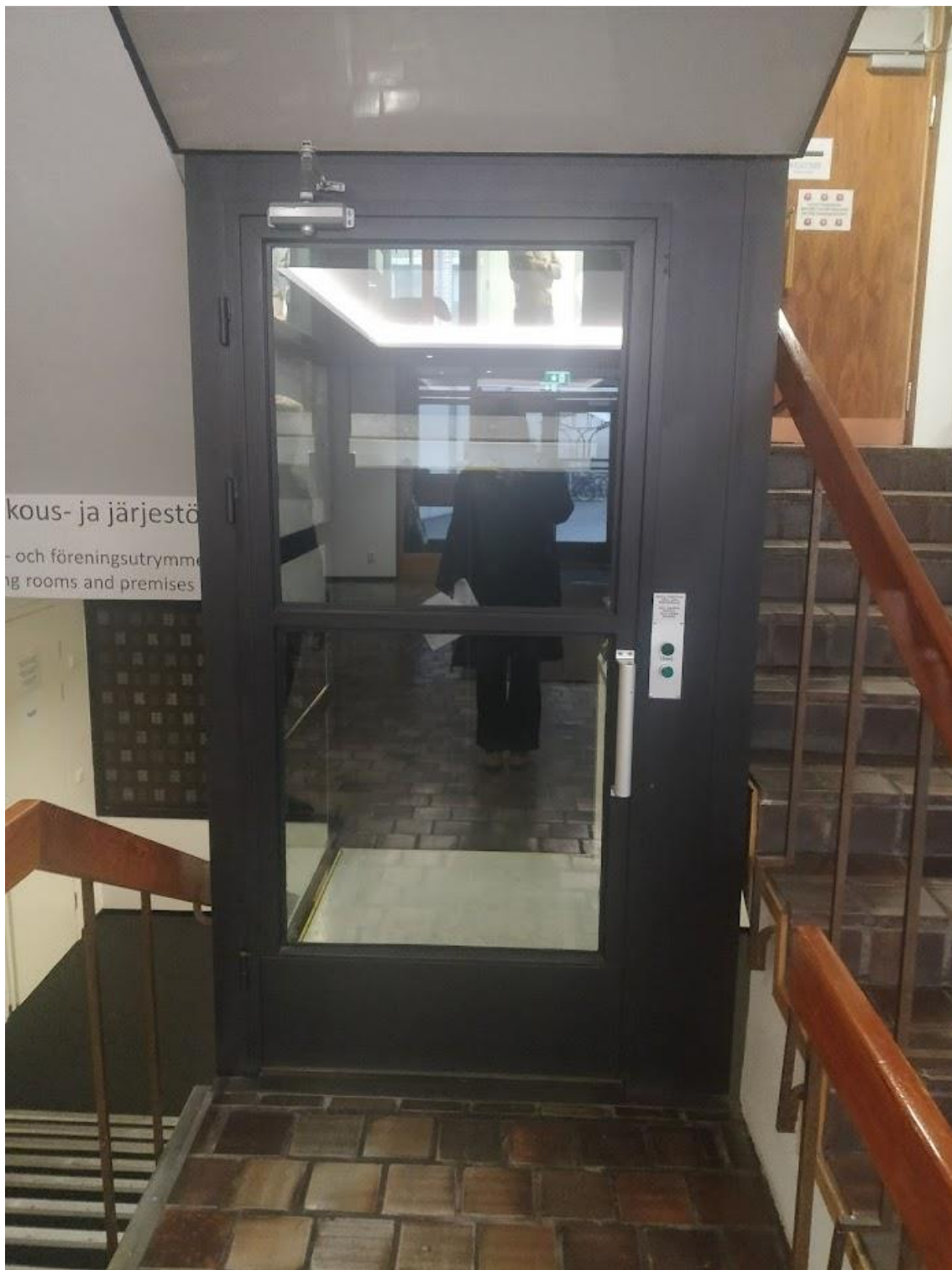


### 2.3. Route to Barrikaadi and Kabinetti

- Meeting room Barrikaadi and the committee space Kabinetti are located in the basement of the building (floor -1, 'P' button in the lift). There is a lift with enough room for a wheelchair available. The lift door does not open automatically by pressing a button, and the door is heavy and difficult to open from a wheelchair. The door does not have a horizontal handle inside, and it does not close automatically. The lift button must be pressed for the entire duration of the trip.
- There is a heavy metal door on the way that is difficult to open from a wheelchair.



*Photo 36: The way from the lobby to the meeting premises.*



*Photo 37: Lift.*



Photo 38: Lift buttons.



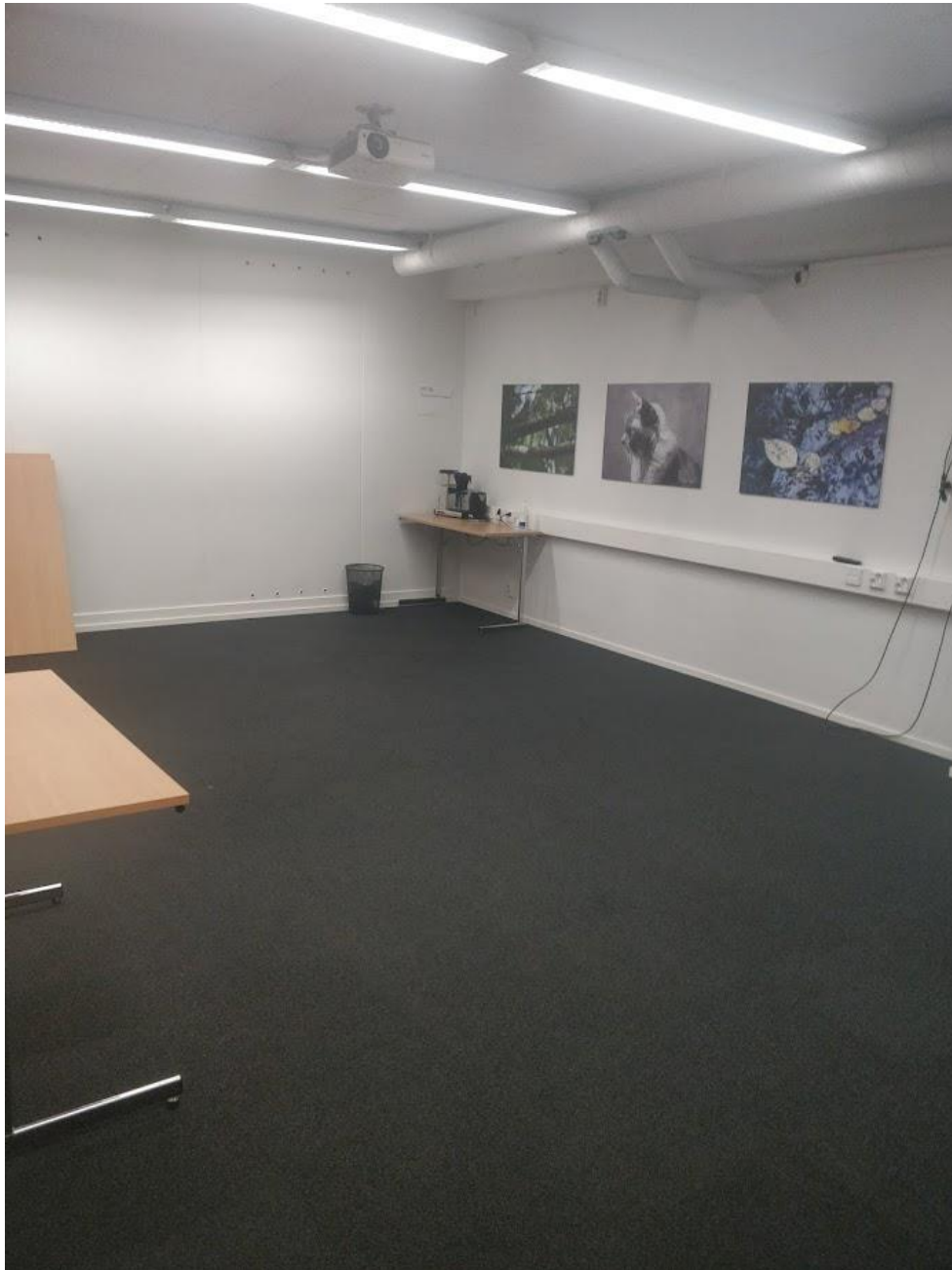


*Photo 39: Door leading to Barrikaadi and Kabinetti.*



## 2.4. Meeting room Barrikaadi

- The door to Barrikaadi is light and 80 cm wide.
- The event organiser is free to arrange the tables and chairs in the room as they please, taking accessible passage with a wheelchair, for instance, into account.
- The event organiser can borrow an induction loop from HYY's Services Office.



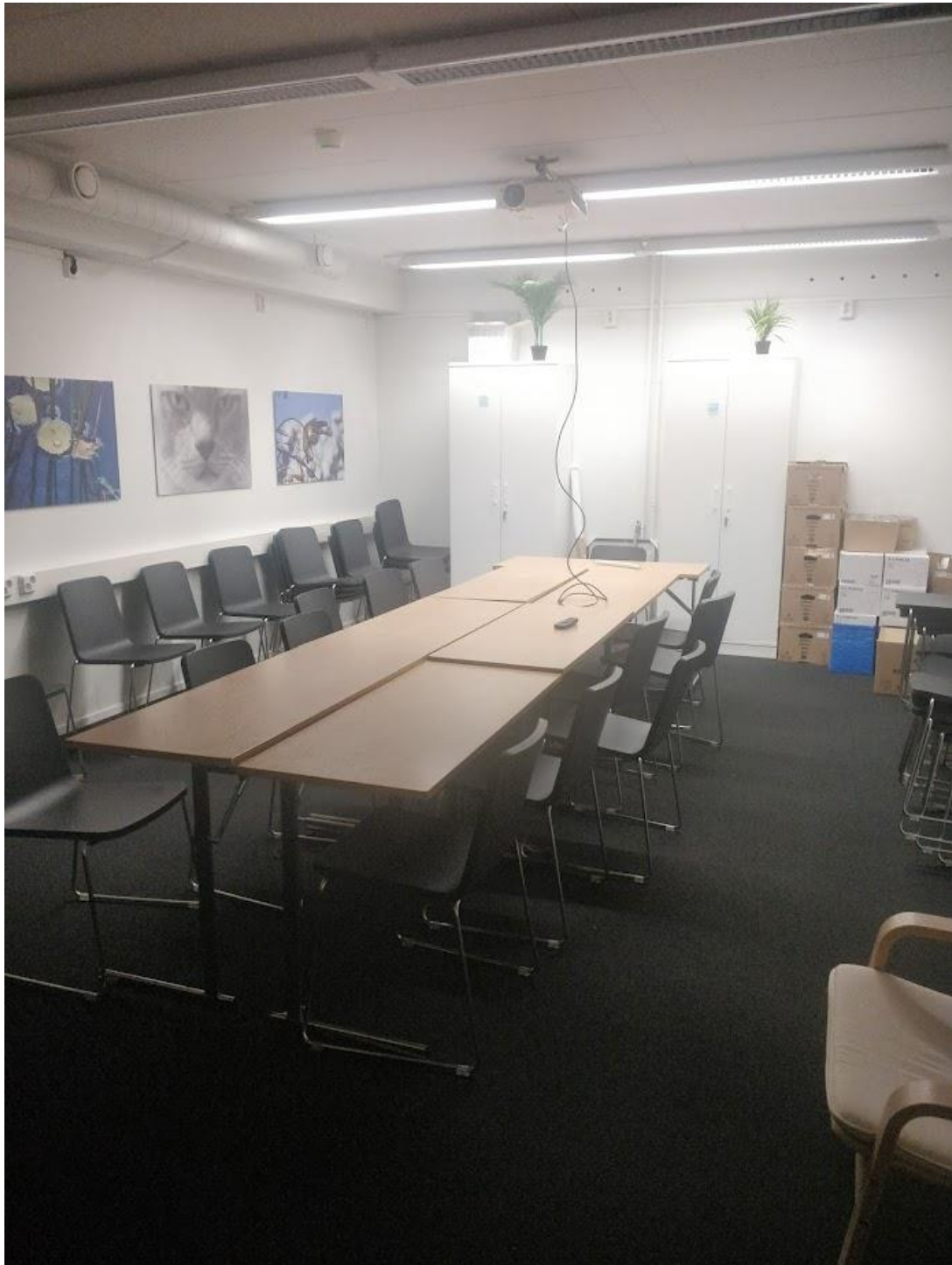
*Photo 40: Barrikaadi with the furniture moved out of the way.*



*Photo 41: Barrikaadi with the furniture moved out of the way.*

## 2.5. Committee space Kabinetti

- The door to Kabinetti is light and and 80 cm wide.
- The event organiser is free to arrange the tables and chairs in the room as they please, taking accessible passage with a wheelchair, for instance, into account.
- The event organiser can borrow an induction loop from HYY's Services Office.



*Photo 42: Kabinetti.*

## 2.6. Accessible toilet

- An accessible toilet is available for the users of Barrikaadi and Kabinetti on the 2nd floor. You can get to the second floor by stairs or lift. The door is marked with a sign and has a horizontal handle.
- There are handrails on both sides of the toilet bowl.
- You can reach the sink from a wheelchair.



*Photo 43: Accessible toilet on the second floor.*





*Photo 44: Accessible toilet.*

## 2.7. Kitchen

- The users of Barrikaadi and Kabinetti have a communal kitchen at their disposal. There is enough room to manoeuvre a wheelchair in the kitchen.
- You cannot get under the countertops with a wheelchair but can get under a separate worktop.



*Photo 45: Kitchen.*