

ACTION PLAN

Petra Pulli & Emil Aarnio
Representative Council's meeting 1/2025

SECTORS OF THE CENTRAL OFFICE

- Administration
 - Quartet
 - Working Committee
 - Documents
- Communication
- Advocacy work
 - Social policy
 - Educational policy
 - Internationality
 - Municipal elections
- Harassment contact persons
- Activities
 - Events + new students + tutoring
 - Organisations
- Services Office
- Environment, sustainable development and development cooperation
- Representative Council elections
- Volunteers
- Bilingualism

ADMINISTRATION – QUARTET



Chair of the Board
Petra Pulli



Chief Financial and
Service Officer
Anna Laurila



Secretary General
Paula Karhunen



Vice Chair of the Board
Emil Aarnio

ADMINISTRATION – WORKING COMMITTEE



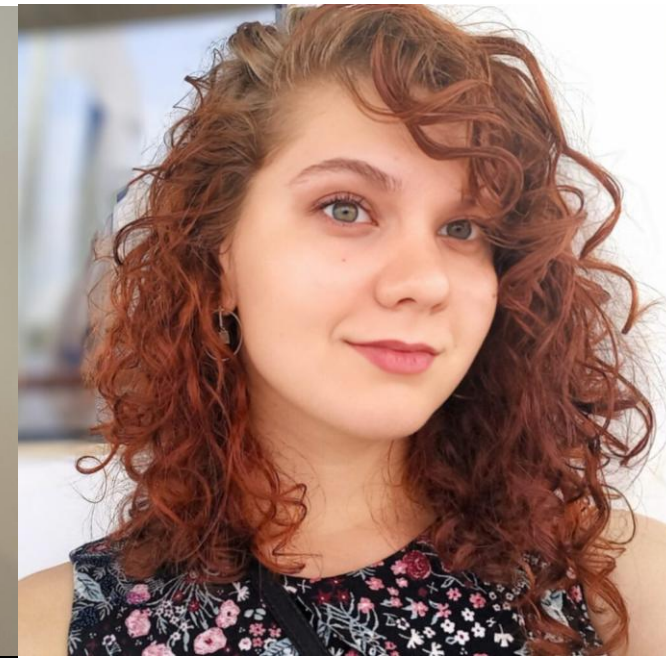
Chair of the Board
Petra Pulli



Vice Chair of the Board
Emil Aarnio



Chair of the
Financial Committee
Joar Jensén



Member of the Board in
charge of Ylva
Juunia Honkanen

ADMINISTRATION – DOCUMENTS



Archivist
Ahto Harmo



Secretary General
Paula Karhunen



Documents Secretary
Eevi Laaksovirta

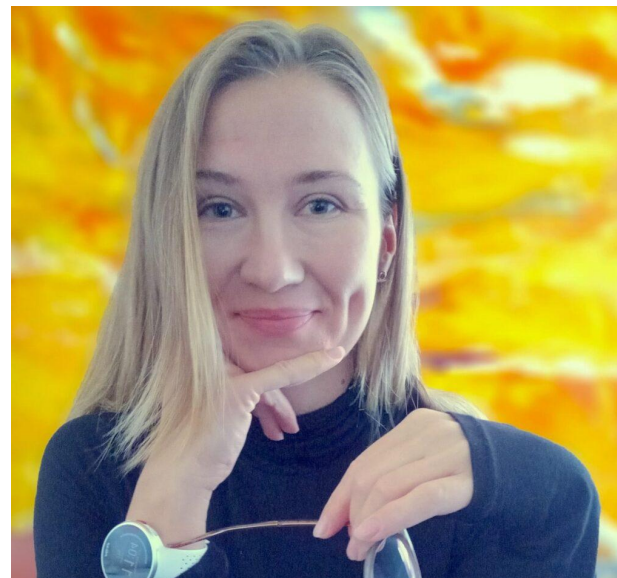
COMMUNICATION



Communications
Specialist
Janne Kajander



Communications
Specialist
Vilma Viertola



Member of the Board,
communication
Martta Sopanen



AD
Mikko Raatikainen

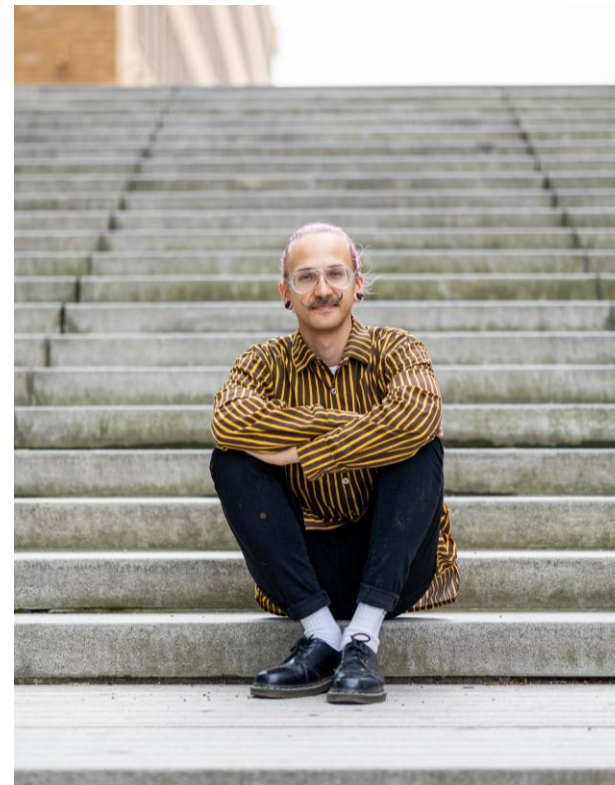
ADVOCACY WORK – SOCIAL POLICY



Specialist in Social Policy
Tiia Niemi



Member of the Board, social
policy
Viena Pentikäinen



Specialist in Social Policy
Teemu Virtanen

ADVOCACY WORK – EDUCATIONAL POLICY



Specialist in Educational
Policy
Mathilda Timmer



Specialist in Educational
Policy
Riku-Petteri Kyllönen



Member of the Board,
educational policy
Venla Lehtinen

ADVOCACY WORK – INTERNATIONAL AFFAIRS



Specialist in Social Policy
Tiia Niemi



Specialist in Educational
Policy
Mathilda Timmer



Member of the Board,
social policy
Viena Pentikäinen

HARASSMENT CONTACT PERSONS



Specialist in Social Policy
Tiia Niemi



Communications Specialist
Janne Kajander

ADVOCACY WORK – MUNICIPAL ELECTIONS



Vice Chair of the Board,
municipal elections
Emil Aarnio



Member of the Board, social
policy
Viena Pentikäinen



Specialist in Social Policy
Teemu Virtanen

ACTIVITIES – EVENTS + NEW STUDENTS + TUTORS



Member of the Board, events,
new students, tutors
Sanni Nieminen



Event Producer
Pia Blomstén

ACTIVITIES – ORGANISATIONS



Member of the Board,
organisations



Specialist in Organisations
Janne Salokoski

SERVICES OFFICE



Organisational Services
Secretary

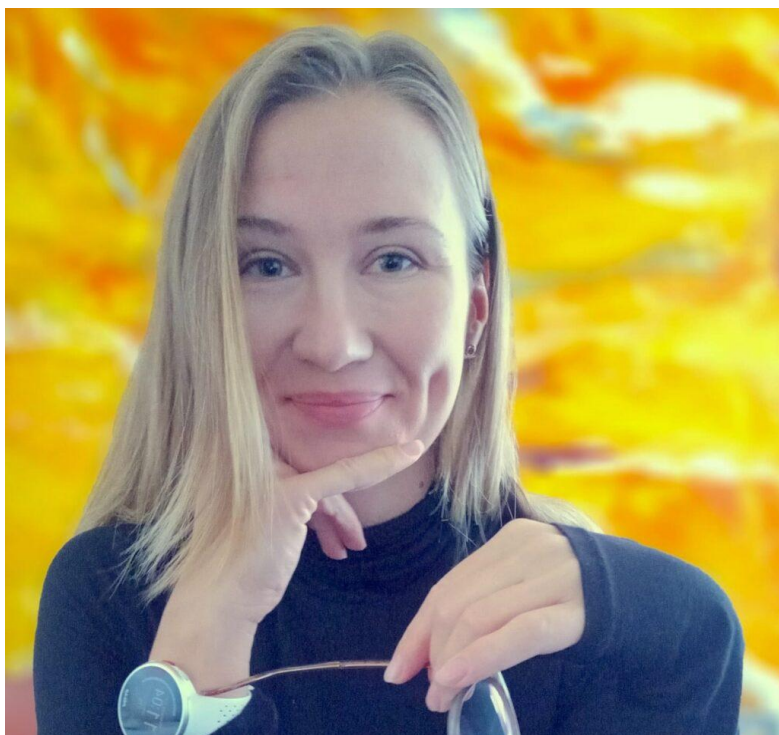


Documents Secretary
Eevi Laaksovirta



Member Services Secretary
Linnea Keltanen

ENVIRONMENT, SUSTAINABLE DEVELOPMENT AND DEVELOPMENT COOPERATION



Member of the Board,
environment, sustainable
development, sports



Member of the Board,
development cooperation
Venla Lehtinen

REPRESENTATIVE COUNCIL ELECTIONS



Member of the Board,
Representative Council
elections



Secretary General
Paula Karhunen



Communications
Specialist
Janne Kajander



Representative Council
election coordinator
??? ????

VOLUNTEERS



Member of the Board,
volunteers
Juunia Honkanen



Member of the Board,
Environmental Committee
Martta Sopenen



Member of the Board,
Development Cooperation
Committee



Member of the Board,
International Committee
Viena Pentikäinen

BILINGUALISM



Bilingualism
Joar Jensen

VOCAL PIONEER

General policies:



Advocacy work
Communication
Board

- HYY promotes students' interests in Helsinki and at the University.
- HYY maintains close contacts with the management of both the University and the City. Other key interest groups include the National Union of University Students in Finland, the Foundation for Student Housing in the Helsinki Region (Hoas) and the Finnish Student Health Service (FSHS).
- During the upcoming year, we will conduct systematic advocacy work by raising issues that are important to our members in society, at the University of Helsinki and towards the City of Helsinki.
- We will focus on carrying out our advocacy work in a way that facilitates high-quality activities on a select number of themes.
- We engage in dialogue boldly but constructively and cherish meaningful contacts with our interest groups.

VOCAL PIONEER

Key measures:

We will emphasise the importance of students' mental health and wellbeing by organising an event on the theme.

Advocacy work: social policy

We will conduct a municipal election campaign and highlight student perspectives towards municipal decision-makers and our members both before and after the elections.

Municipal elections + communication

We will open the discussion on topical themes and take bold stances in public debate through opinion pieces, for instance.

Advocacy work + communication + Board

We will highlight the advocacy work and lobbying we have conducted towards the University of Helsinki and the City of Helsinki in particular in our own communication.

Communication

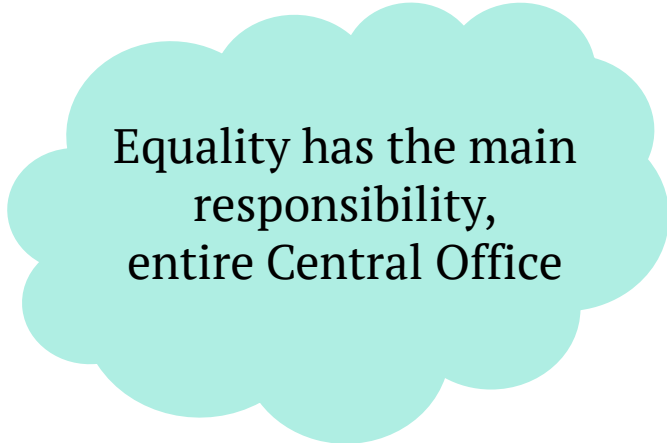
We will emphasise member-oriented advocacy work by reinforcing the activity of the Student Representative Network and the Study Network, which were launched in 2024.

Educational policy


INCREASINGLY EQUAL

General policies:

- HYY operates in an inclusive and intersectionally feminist manner, promoting diverse and accessible student life.
- HYY supports the realisation of equality in its own activities, such as events, and in the organisations operating under it by, for instance, providing training on event safety, carrying out its activities as accessibly as possible and taking the diversity of its members into account.
- In 2025, the Student Union has an Equality Plan guiding its internal development work. We assess the realisation of the Equality Plan once a year.
- Two specialists at the Central Office serve as the Student Union's harassment contact persons. Separate persons in charge of event safety are also named for events.



Equality has the main
responsibility,
entire Central Office



*Equality + harassment
contact persons +
Board*

INCREASINGLY EQUAL

Key measures:

We will develop training events aimed at organisations to be less dependent on time and place to ensure that an increasing number of people have the opportunity to receive information on developing equality work, such as persons in charge of event safety.

*Organisations +
communication*

We will strengthen the engagement of students and organisations from different campuses based on observed individual needs and expectations, within the limits of existing resources.

*Organisations + services
+ events + Board*

We will develop the harassment contact person service and update our service promise to better correspond to our members' needs and our available resources.

*Equality + harassment
contact persons*

COMMUNAL AND DYNAMIC


General policies (1/2):

HYY helps each student find their own place within the Student Union by, for instance, organising the Opening Carnival and Fresher Adventure in a way that is accessible to the whole community. HYY recognises the role of the organisations operating under it as community builders and supports the organisations by providing them with premises, distributing grants and maintaining affordable festive and meeting spaces.

We will once again be showing ourselves on campuses in 2025 through the HYY Pop Up activities in order to strengthen the visibility of our activities and bring the Student Union closer to its members. We will continue the meetings with the organisations operating under us with the aim of identifying their needs for support and reacting to these needs flexibly in our activities. We will support organisations with ensuring the continuity of their activities and looking after the wellbeing of their officials. We also have committees operating under us. They make it possible for members to get involved in developing the Student Union's activities and spurring us on, especially in relation to the environment, development cooperation and internationality.



Events +
organisations +
services + educational
policy



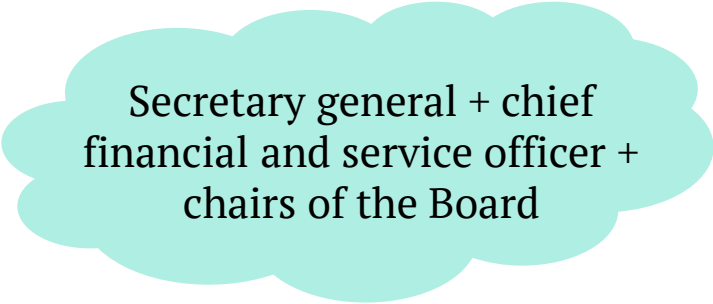
Events + services +
Board + committees

COMMUNAL AND DYNAMIC

General policies (2/2):

We will support the wellbeing of the Student Union's personnel and people in its positions of trust by actively monitoring the results of the work community surveys and taking action on any issues that need improvement emerging during the year.

In 2025, we will also organise the Student Union's Representative Council elections. Our goal is to increase voter turnout from 2024, and we will support this goal through multichannel communication and the organisation of easily accessible election events.



Secretary general + chief
financial and service officer +
chairs of the Board



Representative Council
elections

COMMUNAL AND DYNAMIC

Key measures:

We will conduct a member survey and launch pilots related to issues that the survey results indicate are in need of improvement, if

Communication + chief financial and service officer + member services secretary

We will start planning the Crowning of Manta for 2026.

Events

We will highlight the services offered by the Student Union in our communication to foster an experience of the membership being

Communication

We will develop our current event concepts based on received feedback and make them better correspond to our members' wishes and needs.

Events

The Board chooses contact persons for each faculty from among itself to serve as a link between the Student Union and the students in each faculty. The Board defines the principles for these activities at the beginning of the year.

Volunteers + Board

We will look into the possibility of developing a fresher pass or a similar way of gamifying the process of getting acquainted with the community.

Chief financial and service officer + communication + events + organisations

DEFENDER OF THE BIOSPHERE


General policies:

The principles of sustainable development in the Student Union are guided and defined by its Sustainable Development Plan, updated in 2024. HYY takes the environmental effects of its operations into account in its activities and strives to minimise them. HYY's goal is to show an example to key interest groups, such as other student unions, the University and the City, through its own activities.

During the 2025 operating year, we will carry out the Student Union's internal sustainable development through measures included in the plan and assess its realisation annually. In our advocacy work, we will promote environmental responsibility in accordance with our Policy Paper. This is taken into account as an overarching theme in our city-level influencing efforts as part of our municipal election advocacy work, for instance.



*Sustainable
development +
Central Office*



*Sustainable
development +
advocacy work +
municipal elections*

DEFENDER OF THE BIOSPHERE

Key measures:

We will support the organisations operating under us with sustainability themes by strengthening their skills and compiling information in a way that it is easily accessible for different officials. We will utilise the members of HYY's Environmental Committee to carry out this measure.

*Sustainable development
+ Environmental
Committee*

Out of the measures included in the Sustainable Development Plan, we will focus especially on creating a plan to calculate the Student Union's carbon footprint.

*Sustainable development
+ chief financial and
service officer*

As part of our municipal advocacy work, we will spur on the City of Helsinki in particular on the promotion of cycling and walking.

Advocacy work + Board